

King Edwin Primary School

Main Learning: Plants and trees

Year 2

Subject: Science



Key knowledge

Know what plants, including trees need to survive

Know that a plants needs light, water, air and soil to survive

Know how important trees are for the environment

Know that trees and shrubs take in water and a gas called carbon dioxide and give out a gas called oxygen

Know how to set up a fair test to find out what plants need to survive

Know the names of many of our most common trees by shape of leaf and shape of tree

Vocabulary

trunk

Holds up the trees' crown, protects its inner parts and works like a pipeline, transporting essential materials to the different parts of the tree

deciduous

A tree that sheds its leaves annually.

evergreen

A plant/tree which has foliage that remains green and functional through more than one growing season.

oaks

An oak is a tree or shrub that is part of the beech family.

conifers

Conifers are a group of cone-bearing seed plants.

Thomas Wyatt Turner

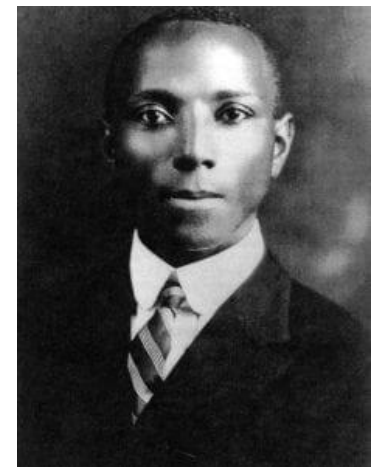
Botanist who studied diseases in plants.



Oaks



Conifers



SCIENCE



Prior Knowledge -