



## Key knowledge

Know why we can see and the part our eyes have in helping us see

Know that light travels in straight lines.

Understand that because light travels in straight lines objects are seen because they give out or reflect light into the eye.

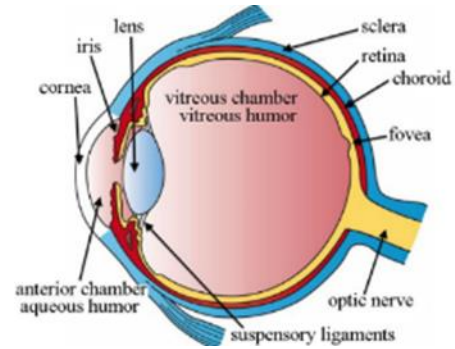
Know that we see things because light travels from light sources to our eyes or from light sources to objects and then to our eyes.

Know that light travels in straight lines and therefore shadows have the same shape as the objects that cast them.

Know how our eyes work.

## Vocabulary

retina	This is at the back of your eye and it has light-sensitive cells called rods and cones
cornea	This is a thin, clear and covers your eye. It's important because it helps you see by focusing light as it enters the eye
iris	By opening and closing the pupil, the iris controls the amount of light that enters the eye
pupil	Can be compared with the shutter of a camera. It is surrounded by the iris which is the coloured part of the eye
lens	Is a curved piece of glass or plastic designed to refract light in a specific way
light wave	One of the characteristics of light is that it behaves like a wave. Light can be defined by its wavelength and frequency. The frequency is how fast the waves vibrate up and down



SCIENCE



Prior Knowledge –